



Berner Fachhochschule
Haute école spécialisée bernoise
Bern University of Applied Sciences

Master Wood Technology

A master's programme unlike any other in Europe

Barbora Starovicova



Are you a timber engineer,
and you want to become an expert in
future-oriented and sustainable use of
wood?

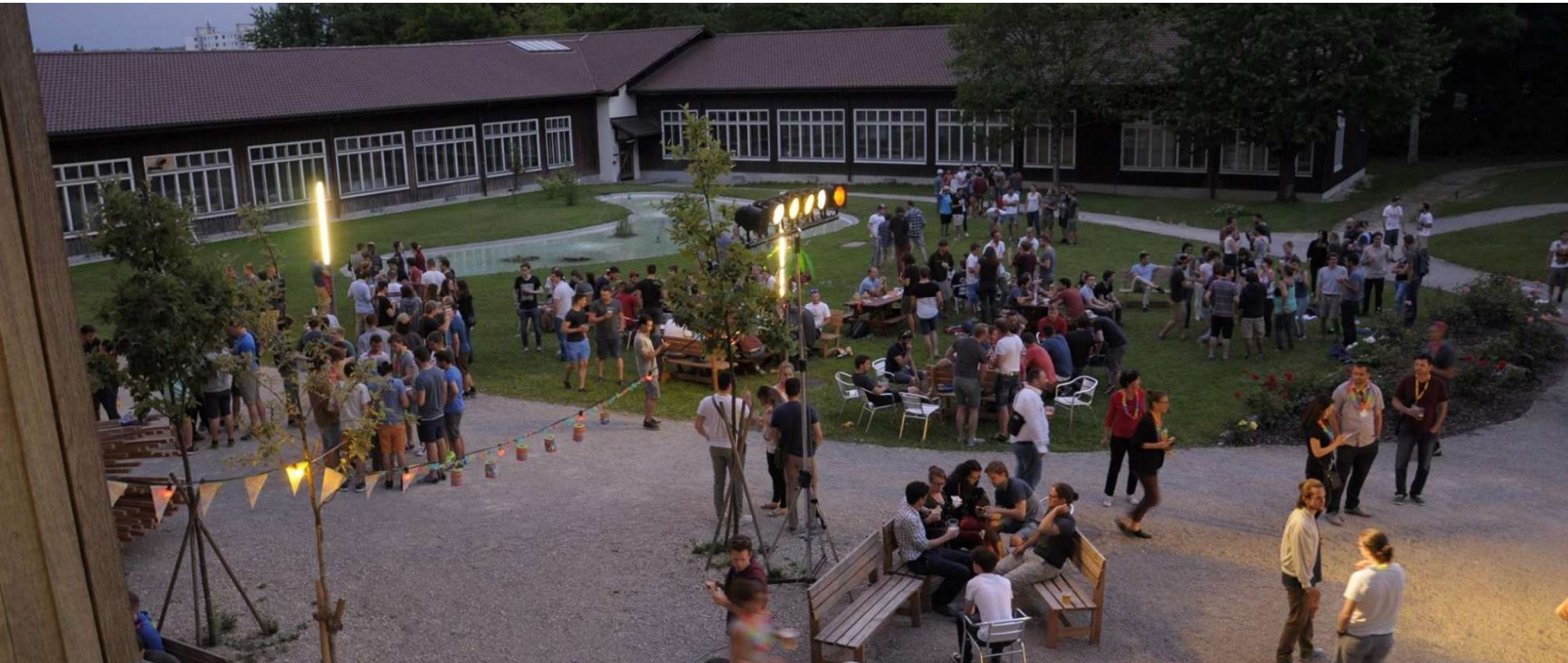
A photograph of the Bern University of Applied Sciences building at night. The building features a prominent, curved wooden lattice structure with white cross-shaped cutouts, illuminated from within. To the left, a glass and steel structure is visible. To the right, a modern building with large windows and a curved facade is lit up. The sky is dark blue.

Bern University of Applied Sciences

Architecture, Wood and Civil Engineering



Join our School – BFH-AHB at Biel:
The «Swiss Competence Center for Wood»



Our Campus at Biel – study, celebrate, and experience community!



Experience our international community

- 20 % Switzerland
- 56 % EU
- 24 % Global



Enjoy the City of Biel



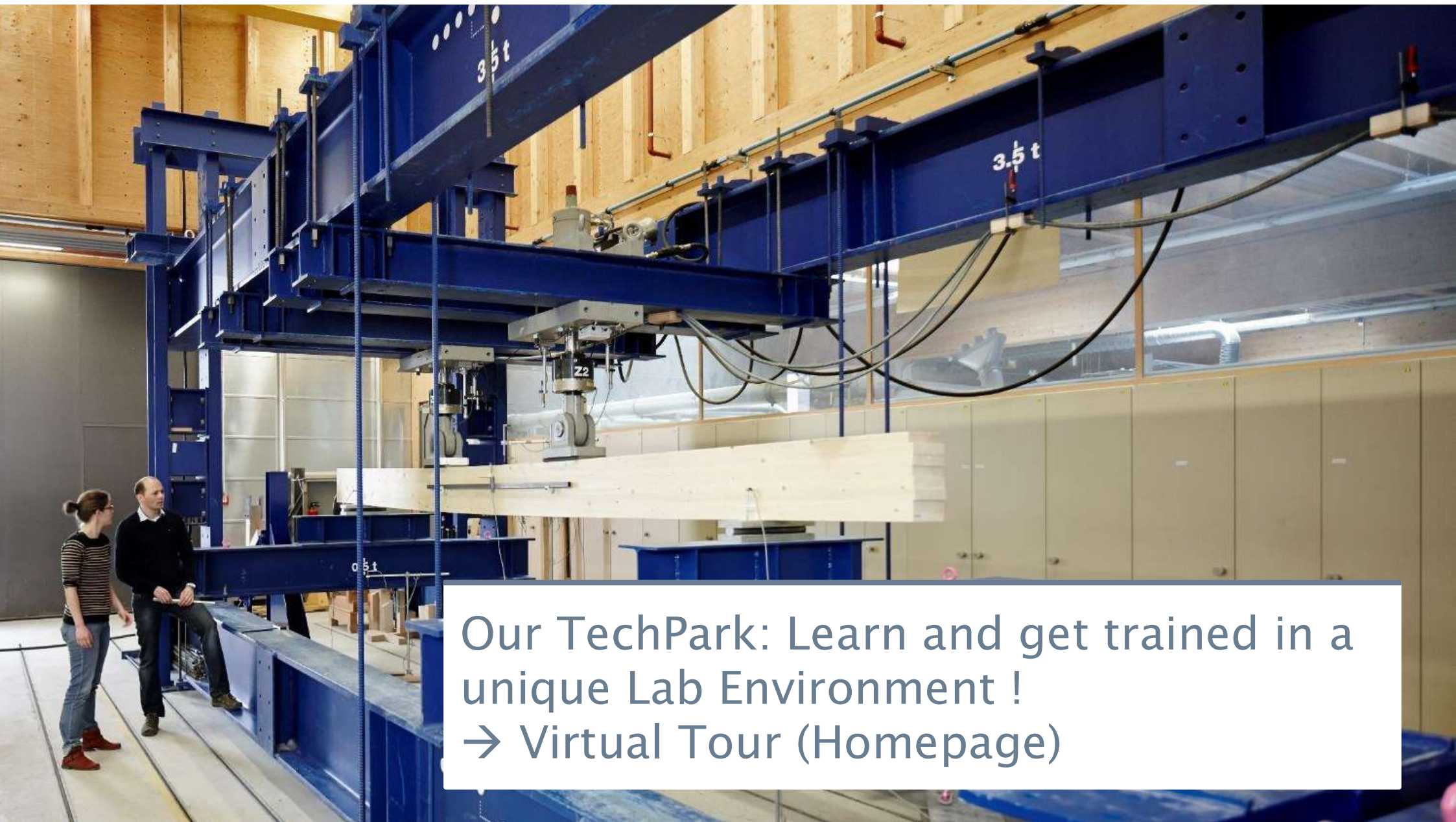




Our Programme: Master of Science in Wood Technology
A master's programme unlike any other in Europe



Case and project-oriented, in strong collaboration with companies, international, focus on Applied Sustainability



Our TechPark: Learn and get trained in a unique Lab Environment !
→ [Virtual Tour \(Homepage\)](#)

A woman with dark hair, wearing a striped top, is shown from the chest up, looking slightly to the right and speaking. Her hands are raised in a gesture. The background is a glowing blue molecular structure with pink highlights, set against a dark background.

Choose from 3 Specializations!



Specialisation Complex Timber Structures

- ▶ Multi-Storey Timber and Hybrid Structures
- ▶ Complex Timber Structures
- ▶ BIM and Digital Interfaces in Construction



Specialisation Management of Processes and Innovation

- ▶ Business Process Intelligence & Process Design
- ▶ Innovation Management
- ▶ Material Technology



Specialisation Innovation in Bio-Based Materials

- ▶ Processes and Development of Bio-based Materials and Products
- ▶ Ecodesign and Life Cycle Assessment
- ▶ Innovation Management

Different Study Models

Different Study Models

■ Lecture ■ freely available

Semester

6

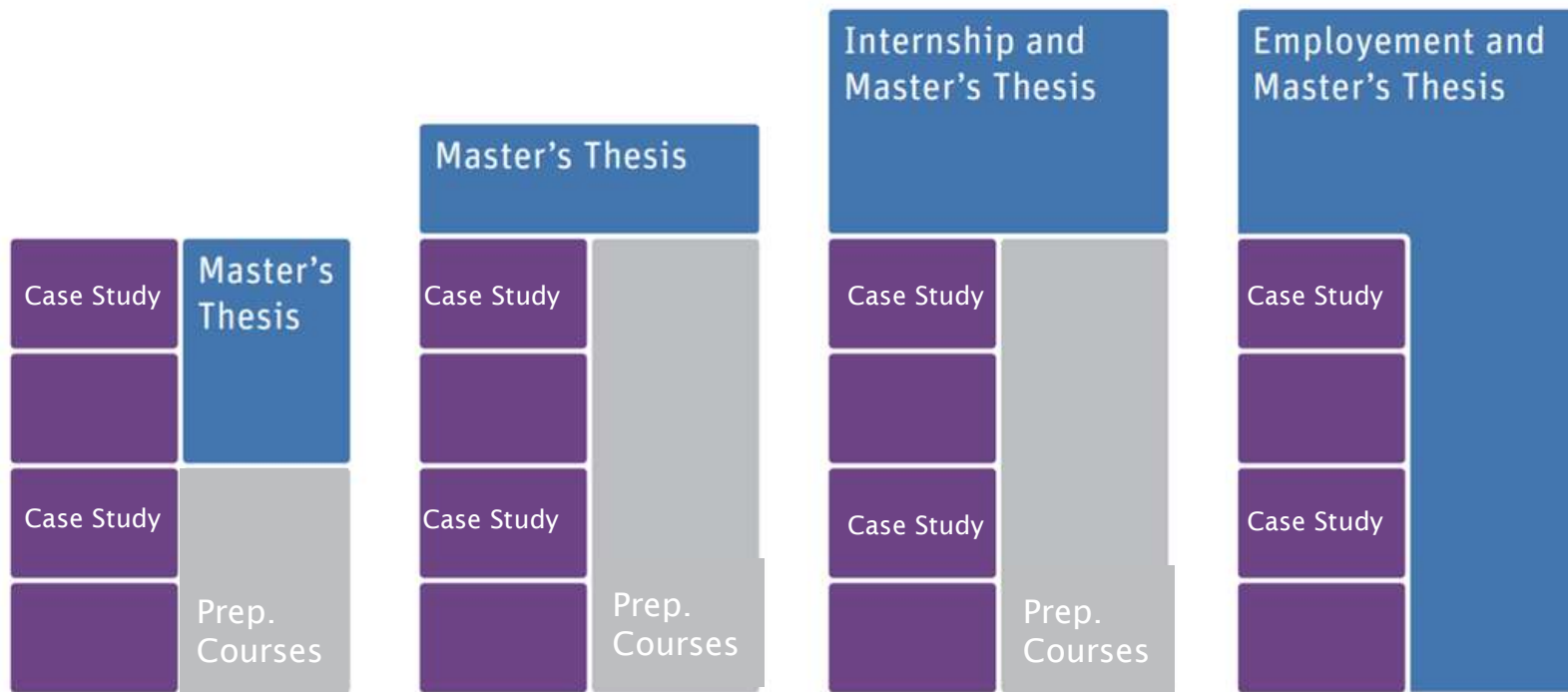
5

4

3

2

1



**Full-time studies
in 4 semester**

**Part-time studies
in 5 semester**

**Part-time studies
in combination
with an internship**

**Part-time studies
in combination
with employment**

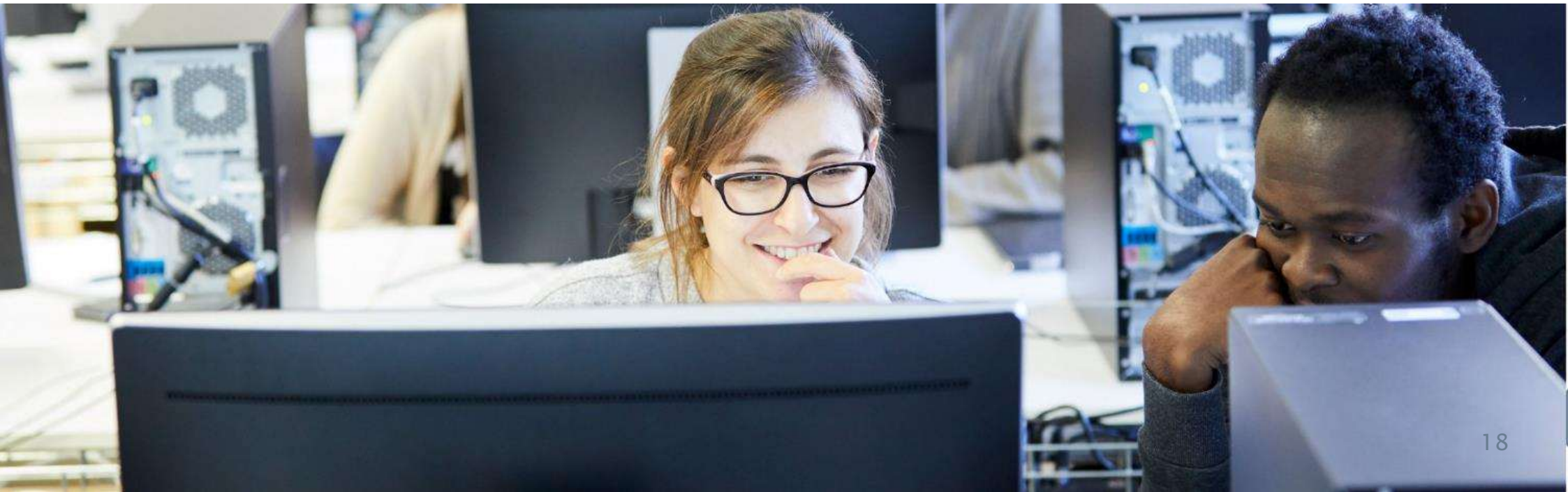
R&D Projects



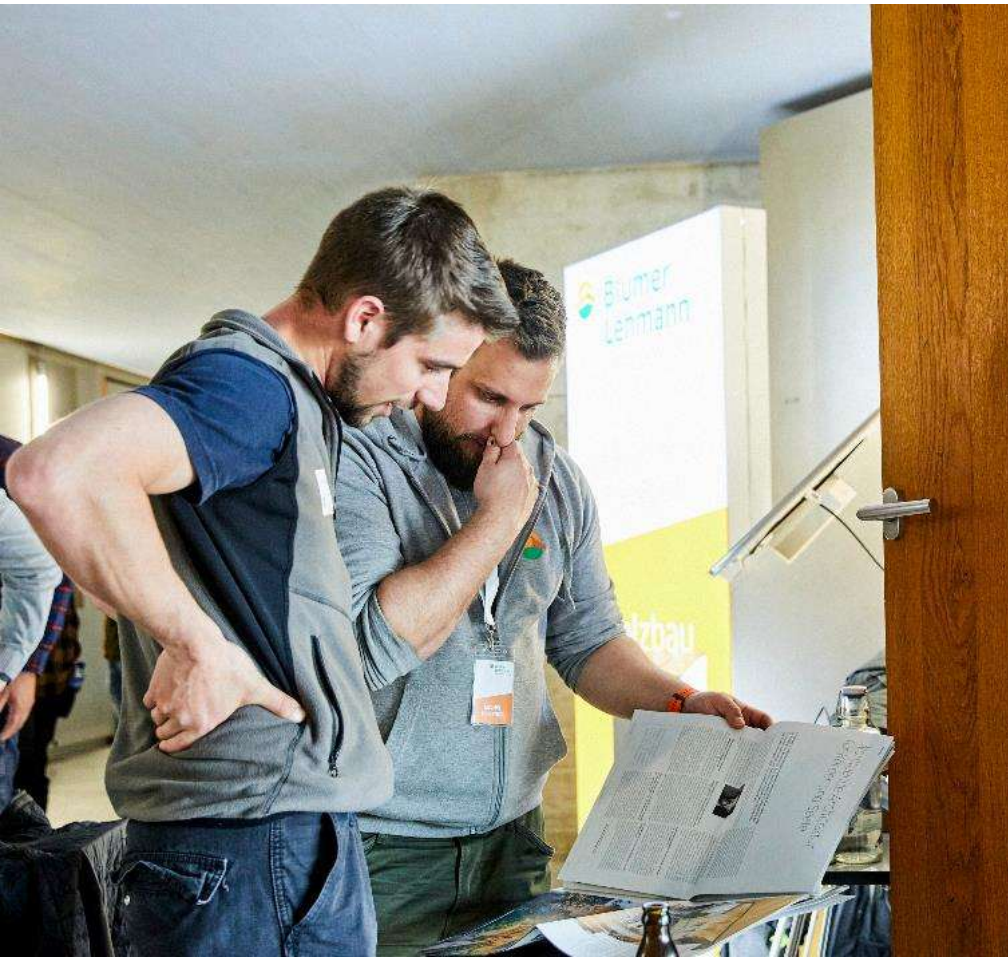
- Do your individual R&D project
- Connect and collaborate with our R&D institutes
- Gain experience in applied R&D
- 3 – 10 ECTS

Combine your studies and work experience

- Lectures on two days per week
- Combine your studies with:
 - a position in a company
 - a position as research assistant at BFH



BFH Career Fair at Biel – Networking with the Business Community and Companies

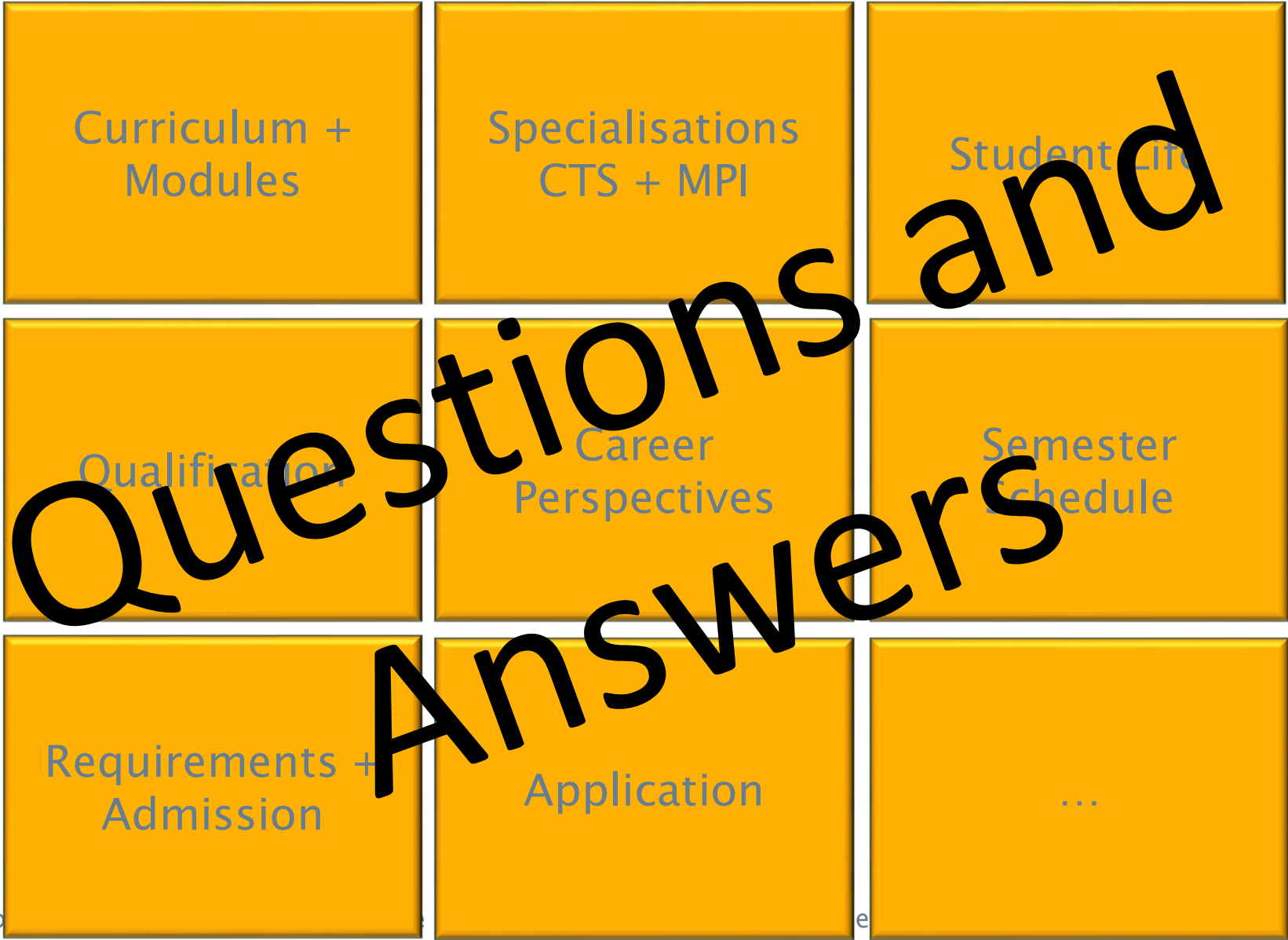


R&D-Project + Innosuisse-Project + Master Thesis



Excursions (Finland 2024; Slovenia 2025)





Contact and Further Information

- ▶ Barбора Starovicova, Coordinator Master Wood Technology
+41 32 344 02 59, barбора.starovicova@bfh.ch
- ▶ Katerina Valova
+41 31 848 34 61, katerina.valova@bfh.ch
- ▶ Further information
 - Homepage: www.ahb.bfh.ch/master-wood
 - Facebook: www.facebook.com/bfh.msc.woodtechnology
 - Campus Tour: https://youtu.be/2DfSd_Og7e8
 - Applied Sustainability: [Master Wood Technology I Applied Sustainability I BFH - YouTube](https://www.youtube.com/watch?v=pvsOxj-tGN4&feature=emb_logo)
 - CTS Experts (d): https://www.youtube.com/watch?v=pvsOxj-tGN4&feature=emb_logo
 - Testimonials Graduates (e): [Master of Science in Wood Technology: What students say - YouTube https://www.youtube.com/watch?v=ccWtBOJGcLY&feature=emb_logo](https://www.youtube.com/watch?v=ccWtBOJGcLY&feature=emb_logo)